

EMANUELE

Altezza: 187 cm

Seno: 95 cm

Vita: 79 cm

Fianchi: 99 cm

Scarpe: 45.0

Occhi: green

Capelli: dark_brown



MOI MODELS
MANAGEMENT



MOI MODELS
MANAGEMENT

L'OFFICIEL

AZERBAIJAN

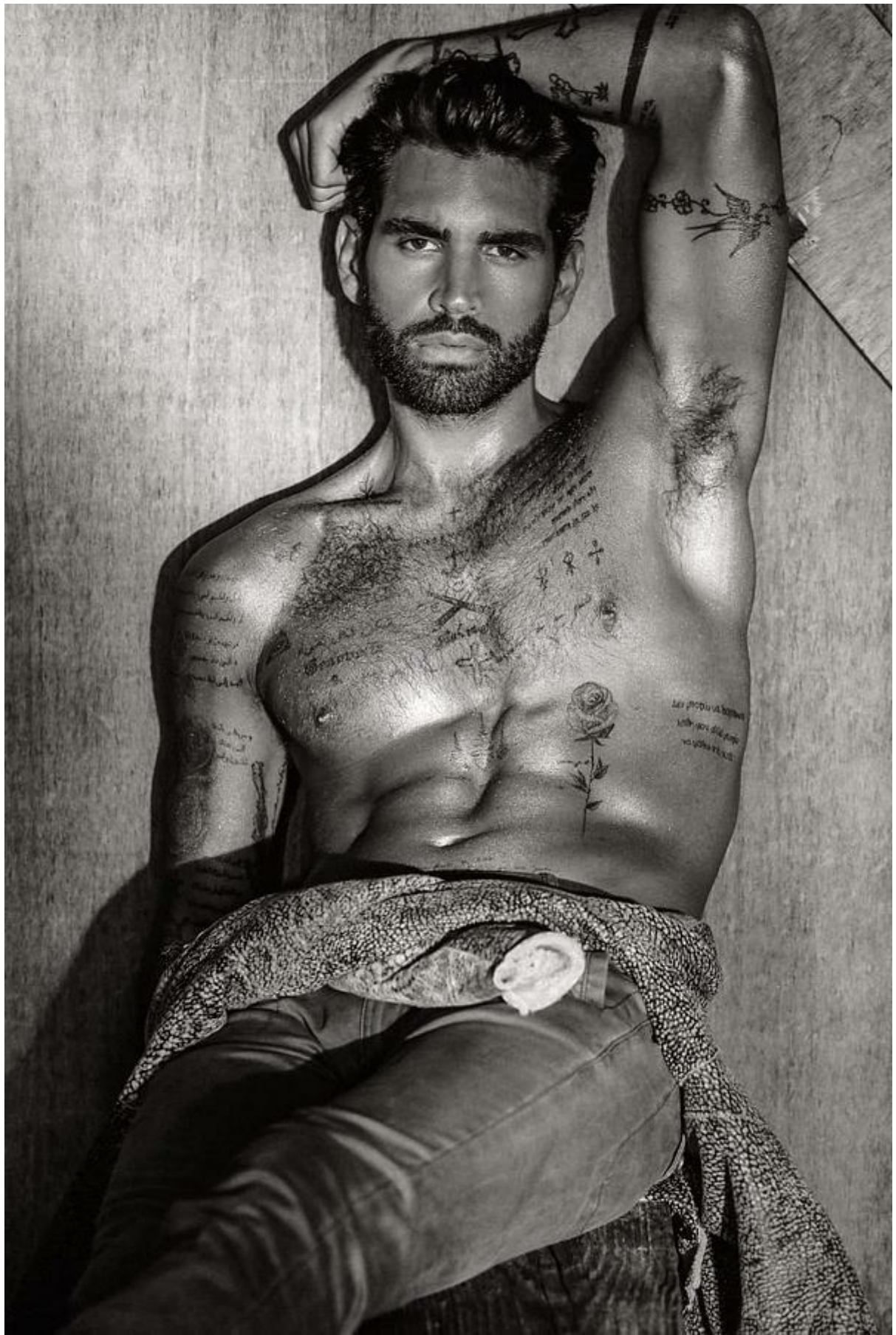
DE LA COUTURE ET DE LA MODE DE PARIS



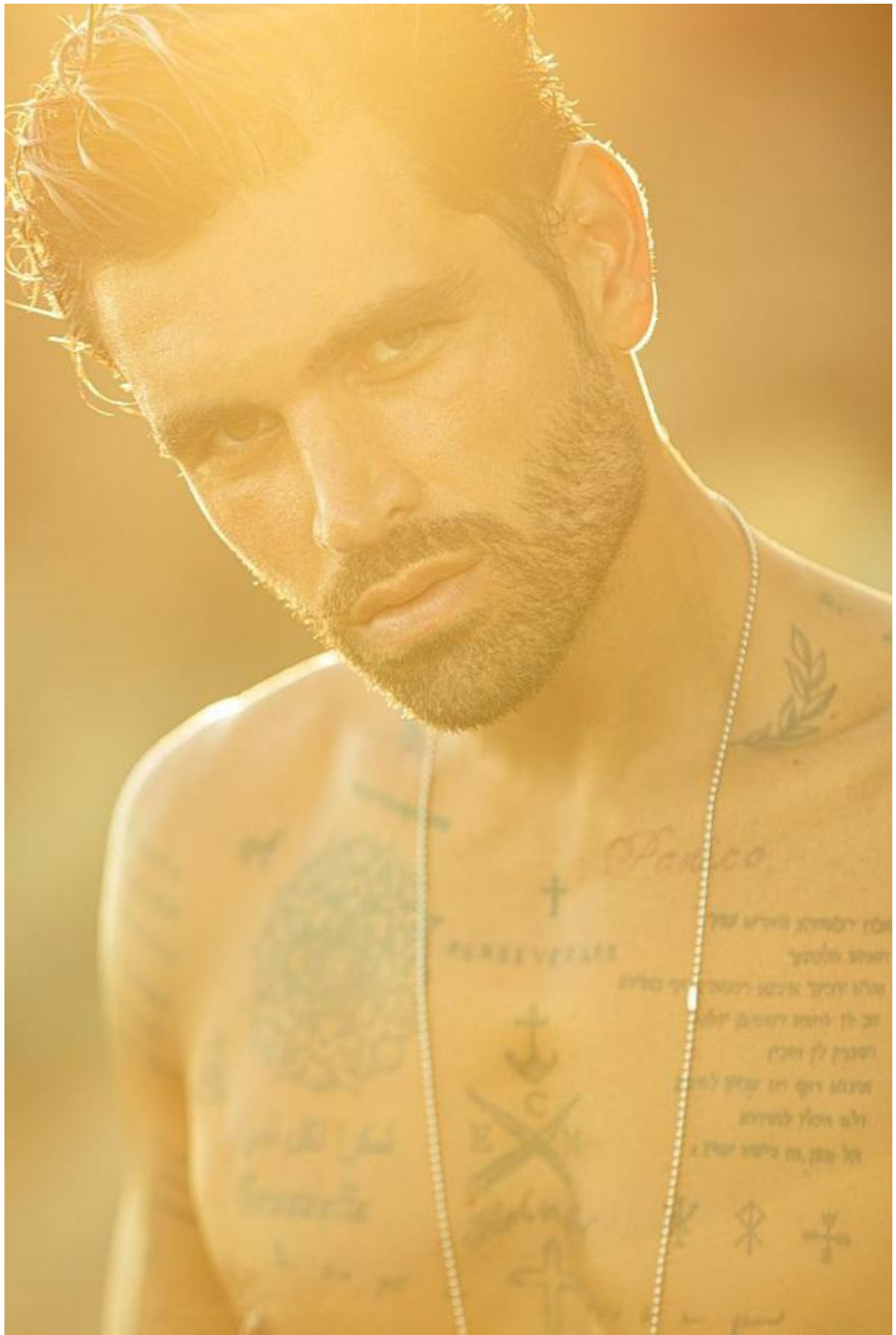
MOI MODELS
MANAGEMENT



MOI MODELS
MANAGEMENT



MOI MODELS
MANAGEMENT



MOI MODELS
MANAGEMENT



M/M
MOI MODELS
MANAGEMENT



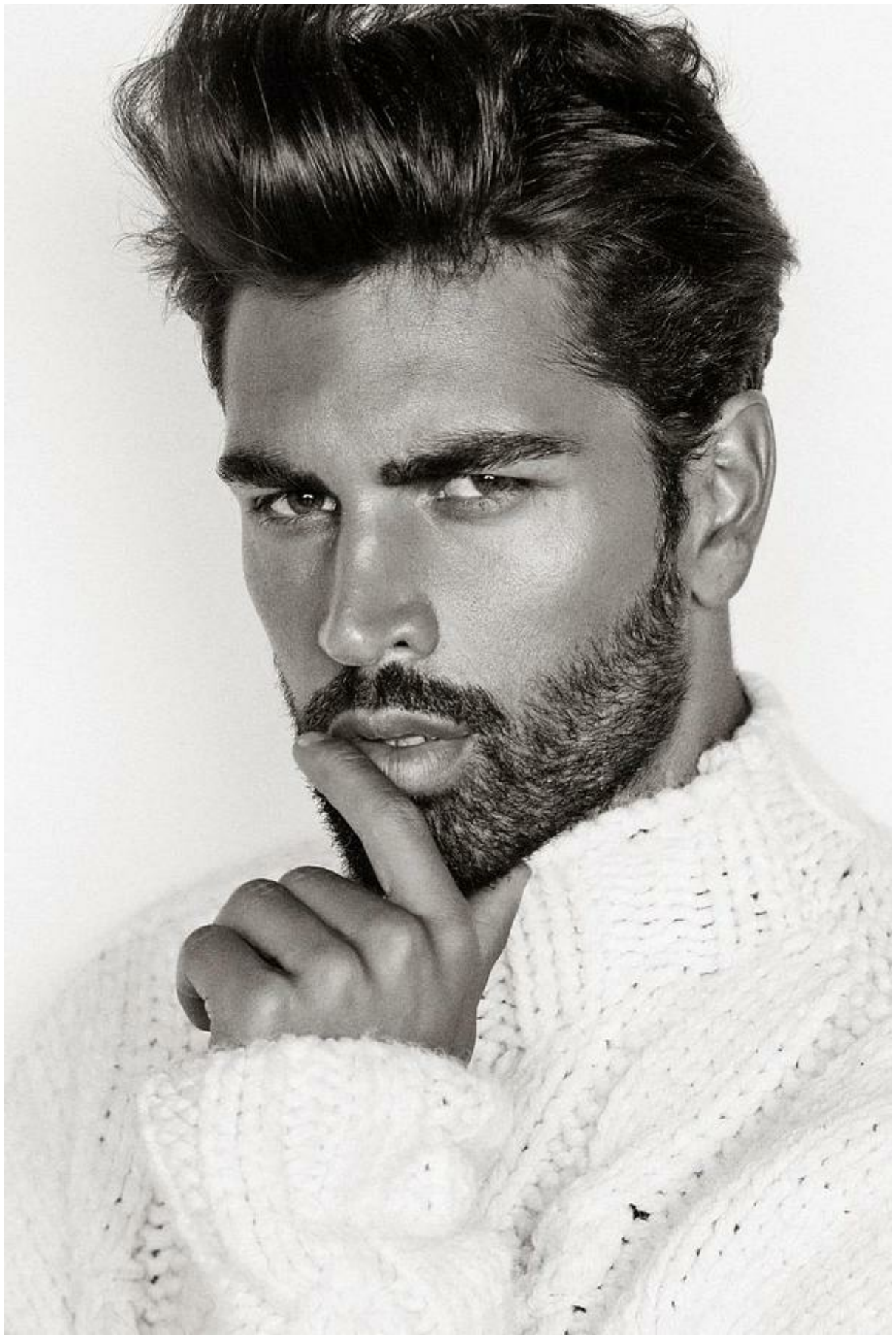
MOI MODELS
MANAGEMENT



MOI MODELS
MANAGEMENT



MOI MODELS
MANAGEMENT



MOI MODELS
MANAGEMENT



MOI MODELS
MANAGEMENT



MOI MODELS
MANAGEMENT

The Perfect_Edi

Beau

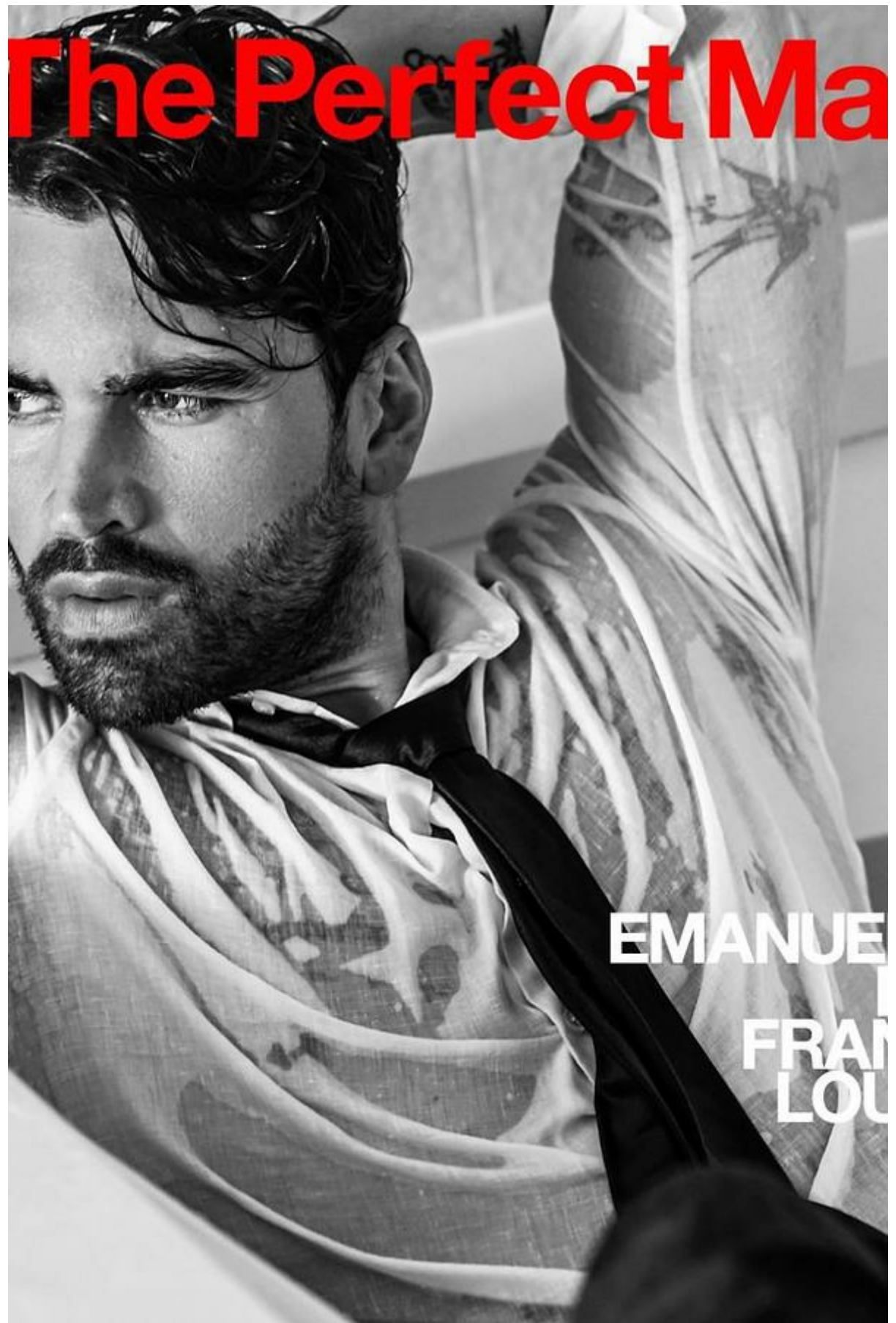
E
R
F
E
C
T
M
A
N

new
MACHISMO

Photographs by Frank Louis



MOI MODELS
MANAGEMENT



The Perfect Ma

EMANUE

FRAN
LOU



MOI MODELS
MANAGEMENT



MOI MODELS
MANAGEMENT



M/M
MOI MODELS
MANAGEMENT



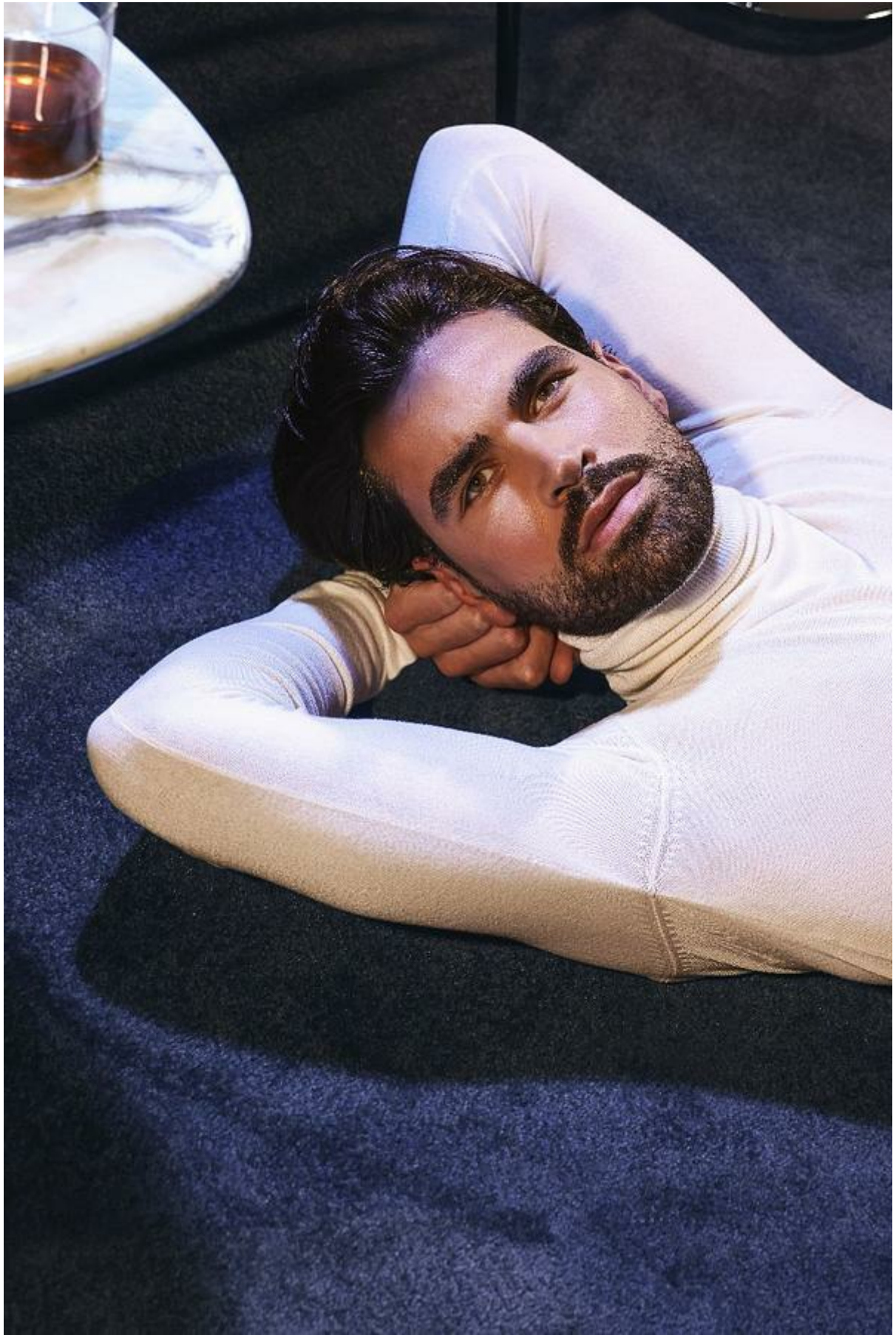
MOI MODELS
MANAGEMENT



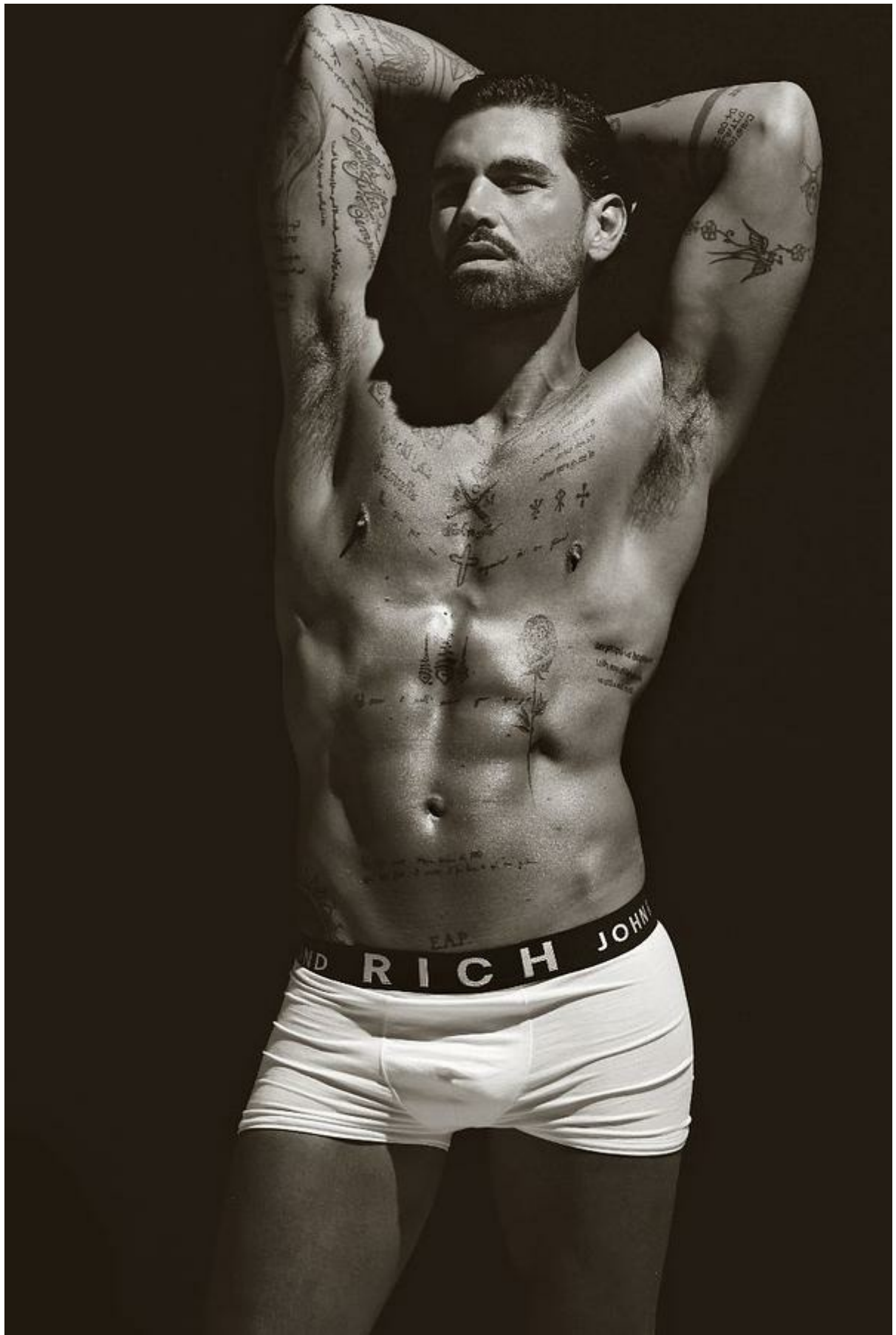
MOI MODELS
MANAGEMENT



M/M
MOI MODELS
MANAGEMENT



M/M
MOI MODELS
MANAGEMENT



MOI MODELS
MANAGEMENT



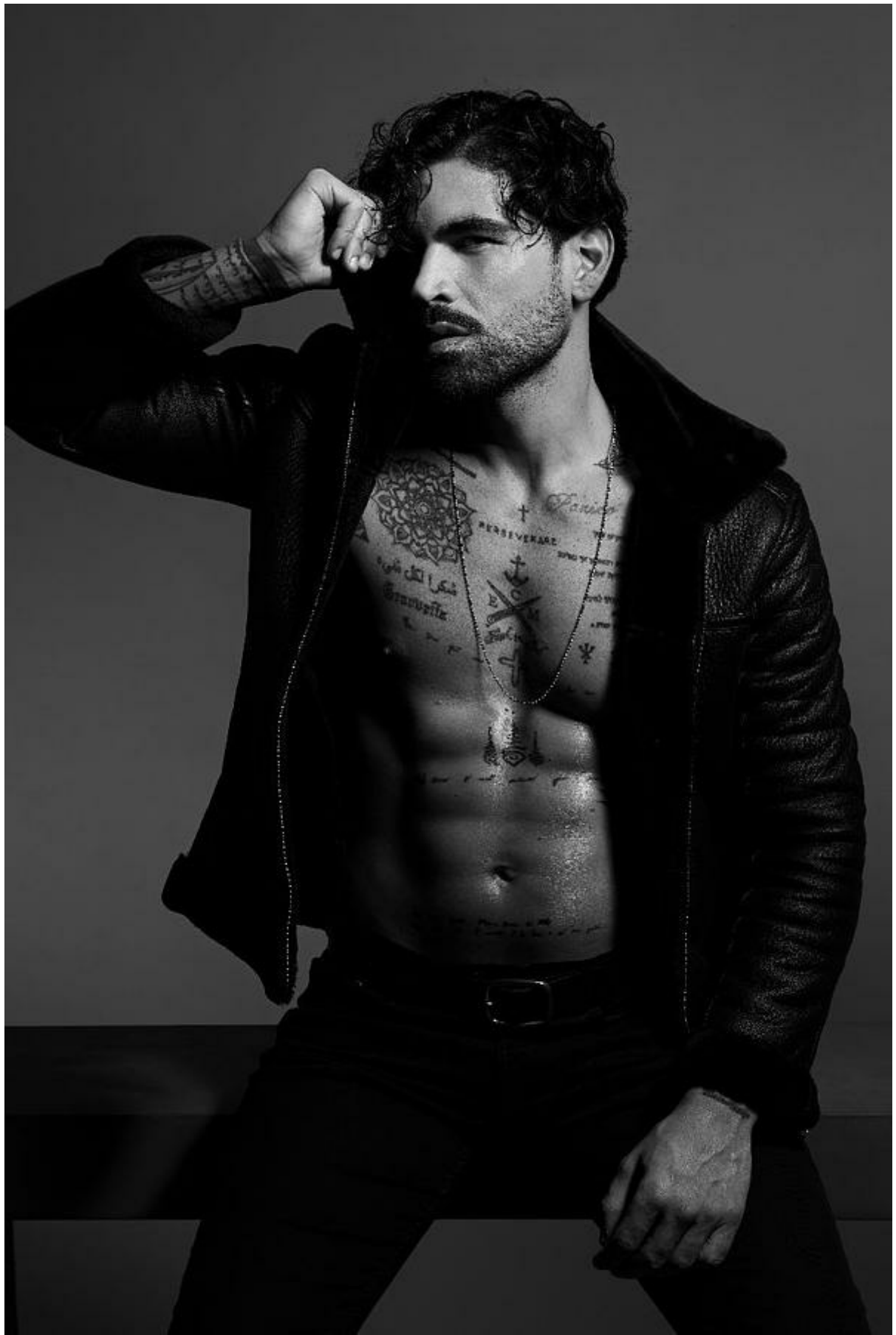
MOI MODELS
MANAGEMENT



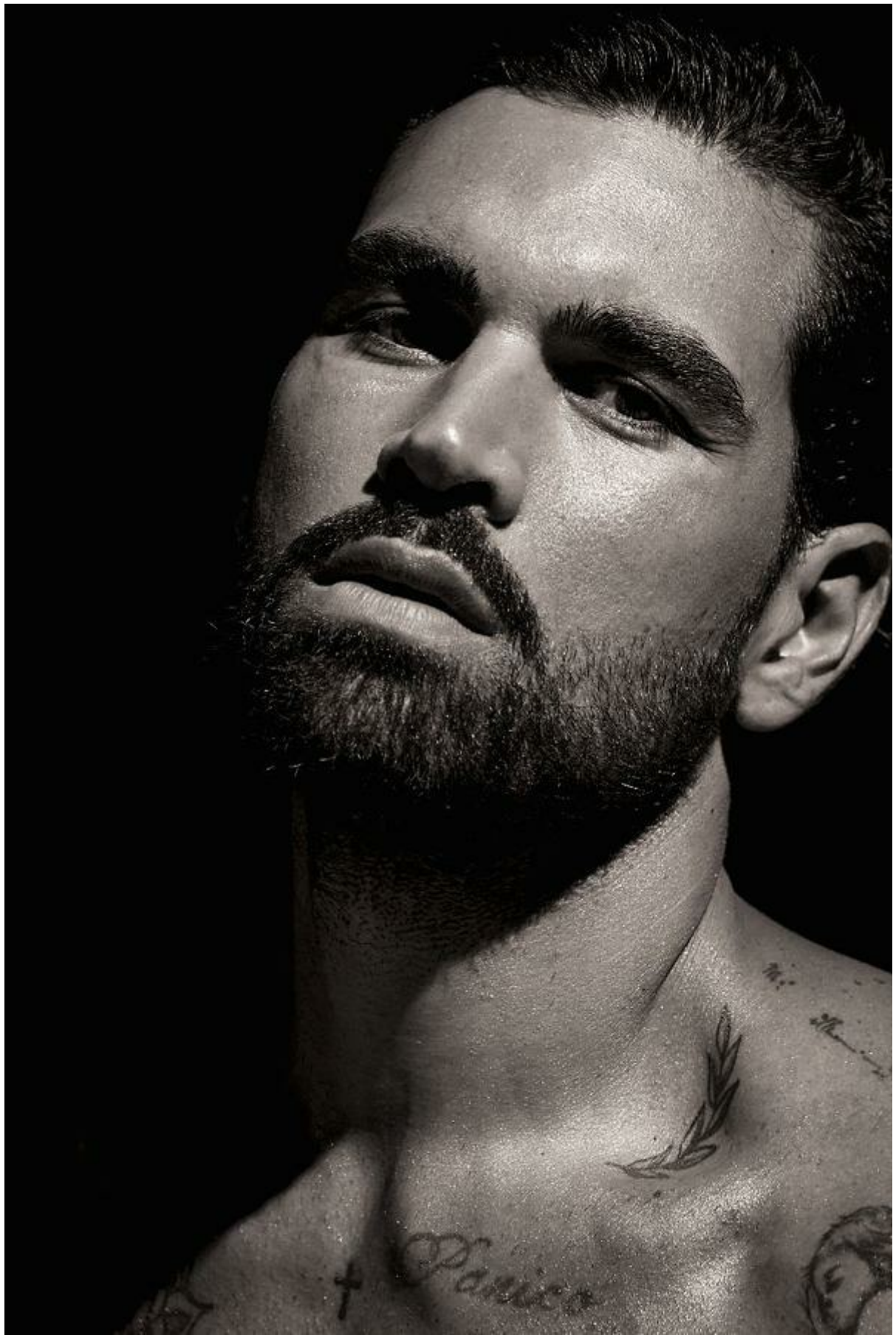
MOI MODELS
MANAGEMENT



MOI MODELS
MANAGEMENT



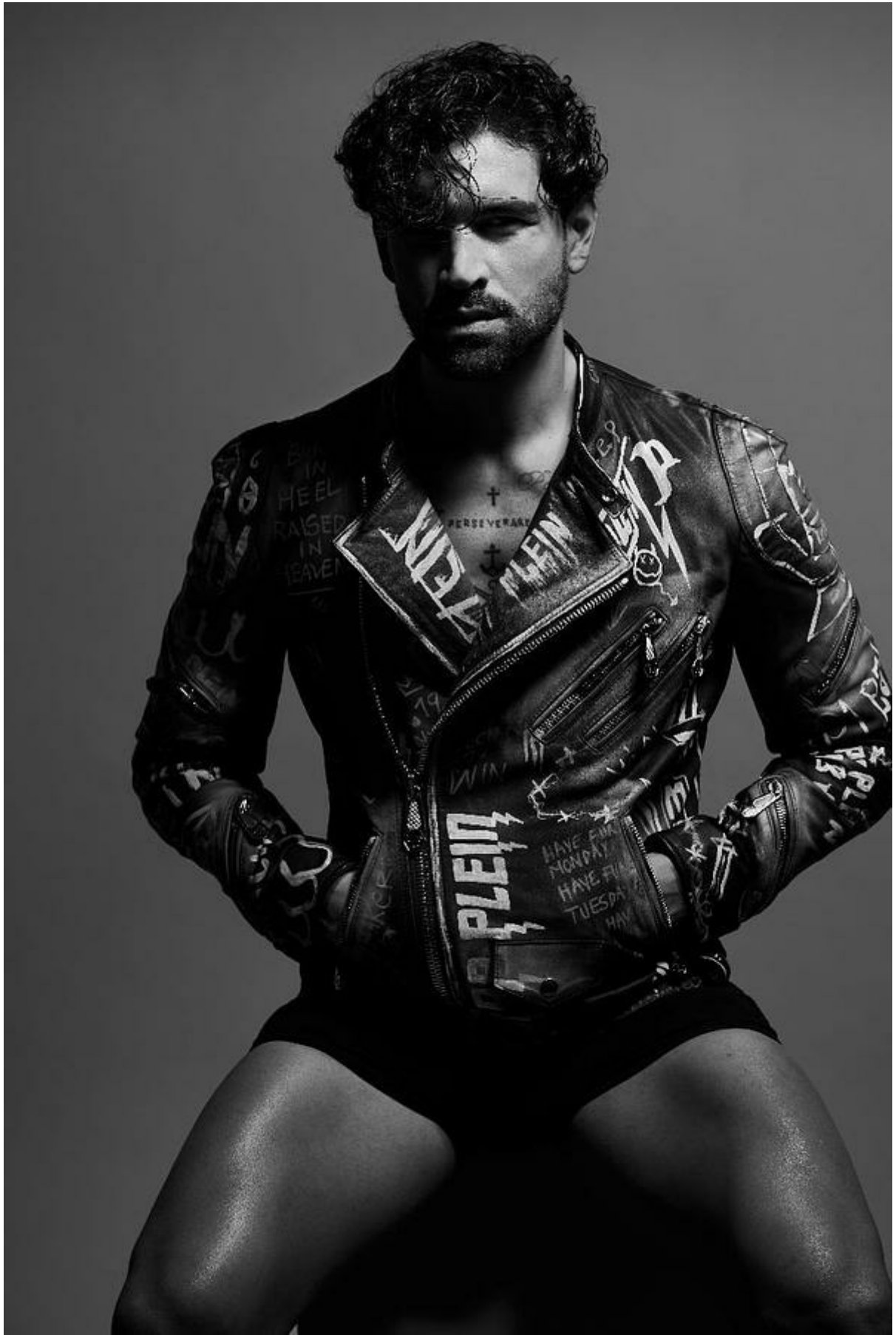
MOI MODELS
MANAGEMENT



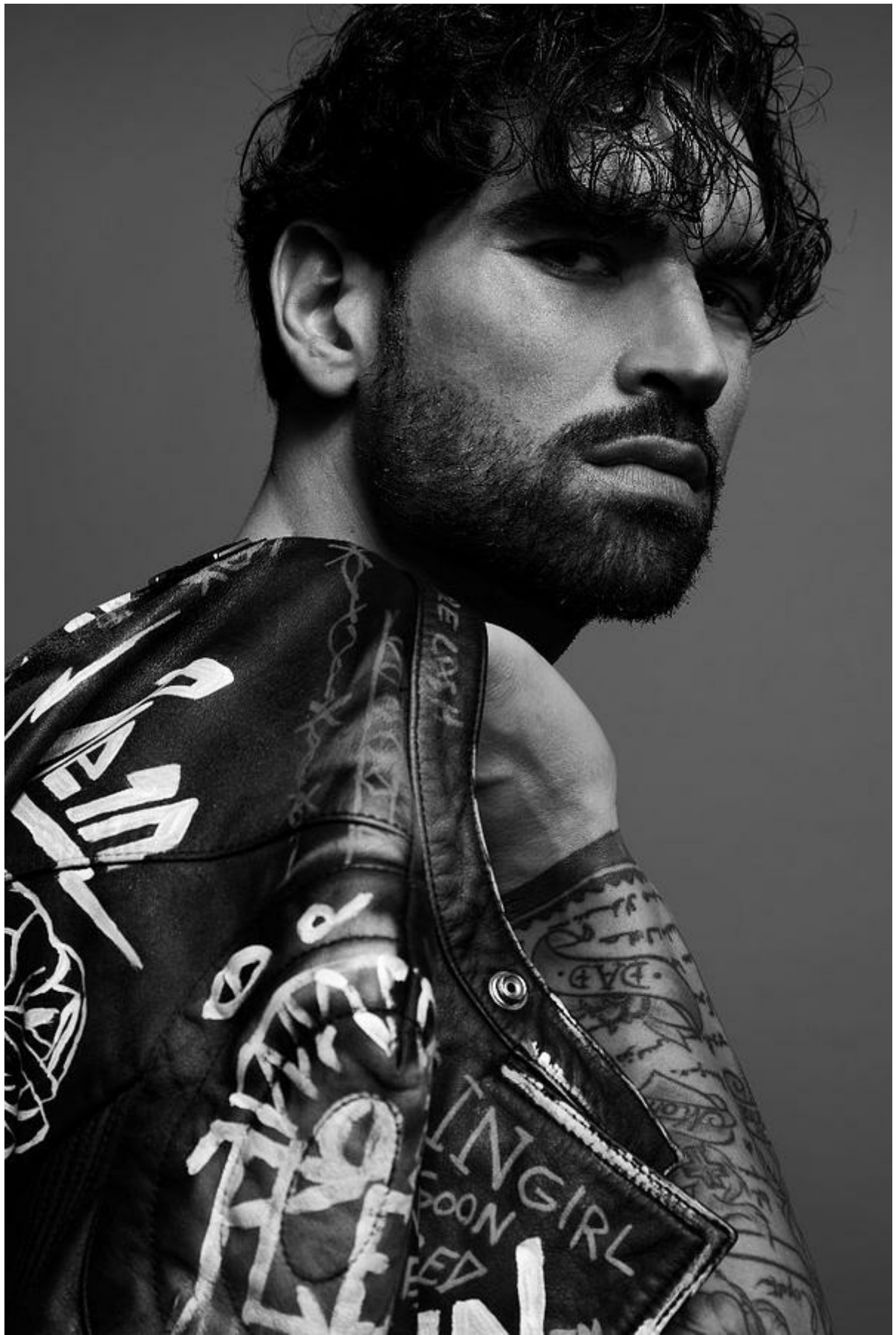
MOI MODELS
MANAGEMENT



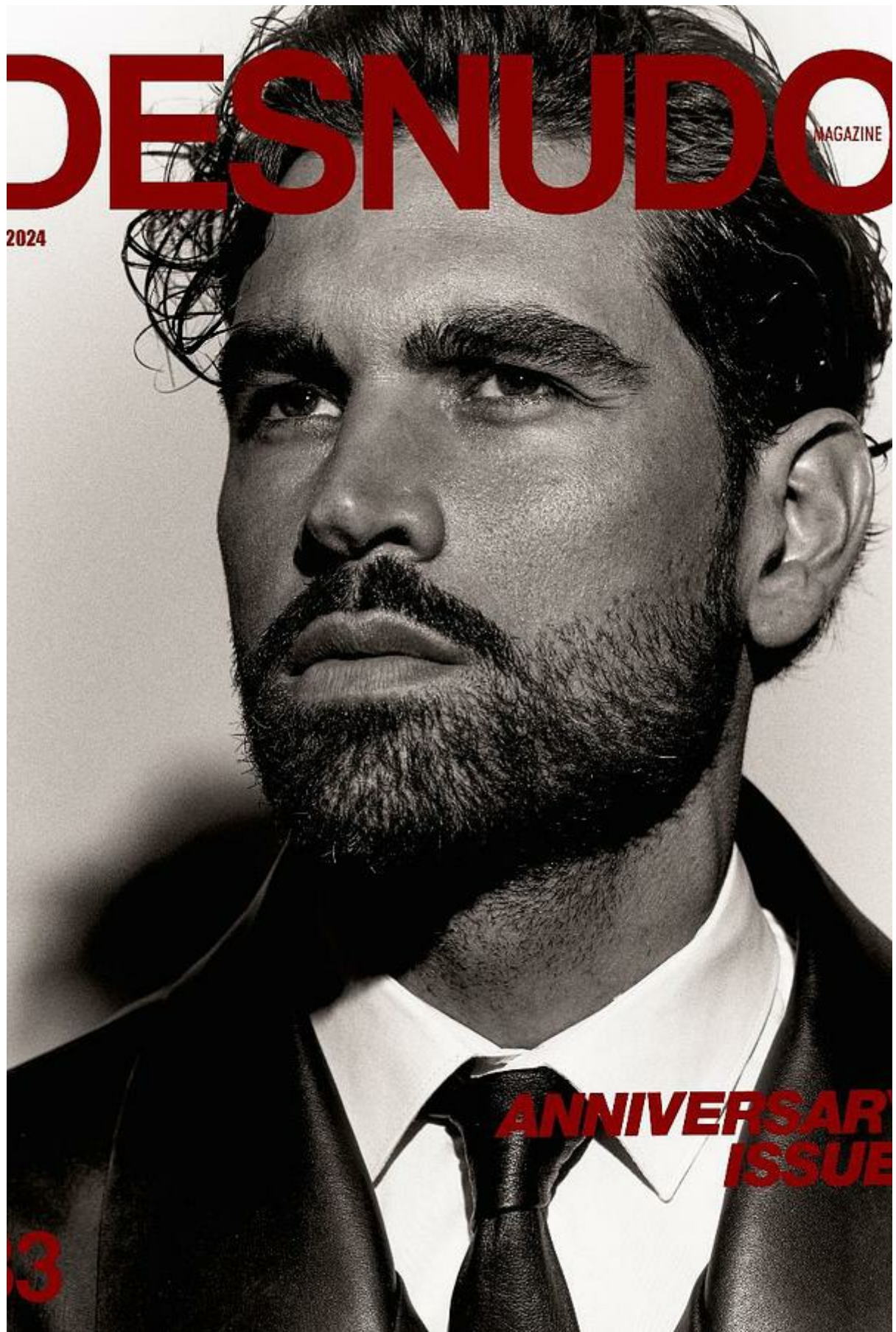
MOI MODELS
MANAGEMENT



MOI MODELS
MANAGEMENT



MOI MODELS
MANAGEMENT



DESNUDO

MAGAZINE

2024

**ANNIVERSARY
ISSUE**

3



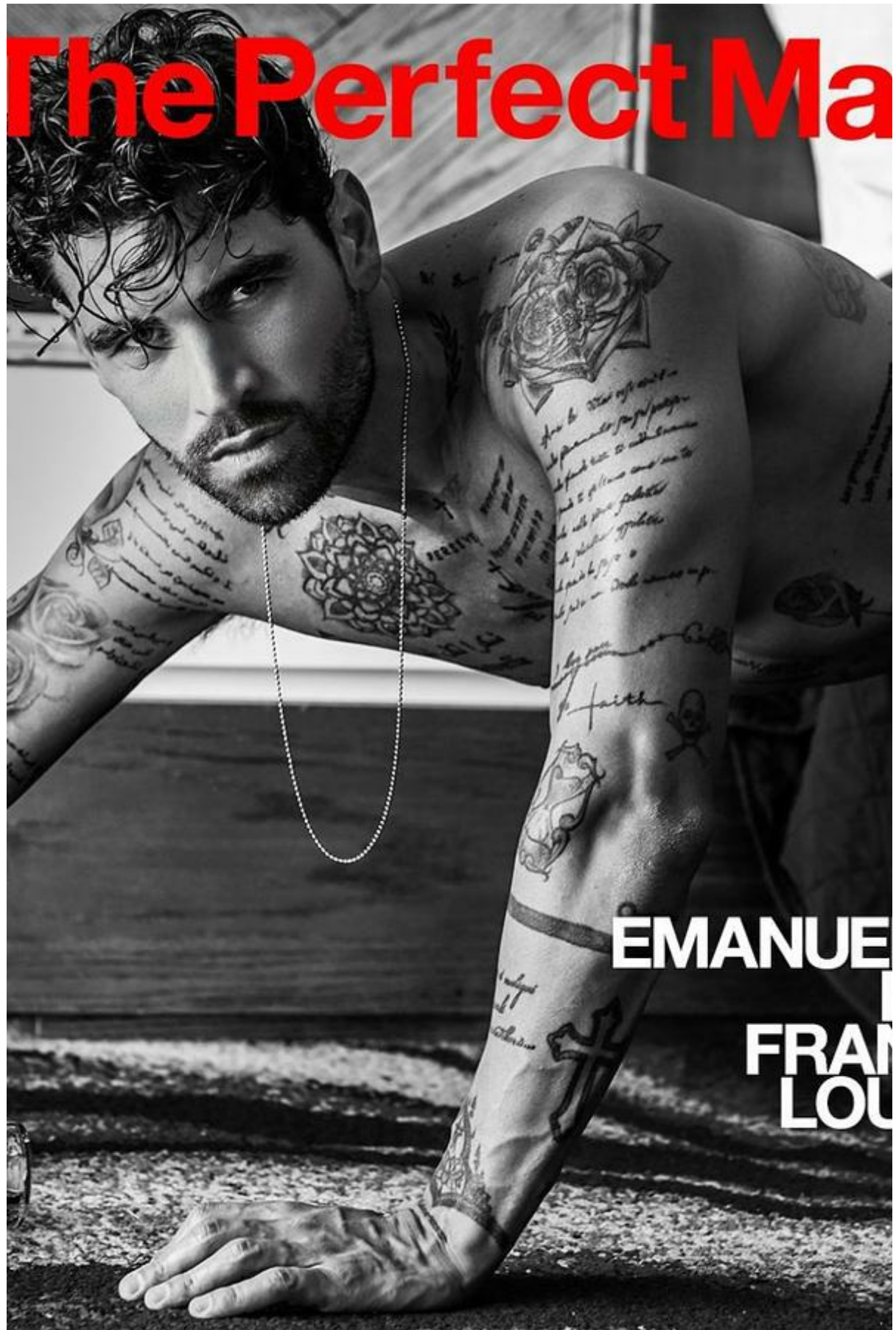
MOI MODELS
MANAGEMENT



M/M
MOI MODELS
MANAGEMENT



MOI MODELS
MANAGEMENT



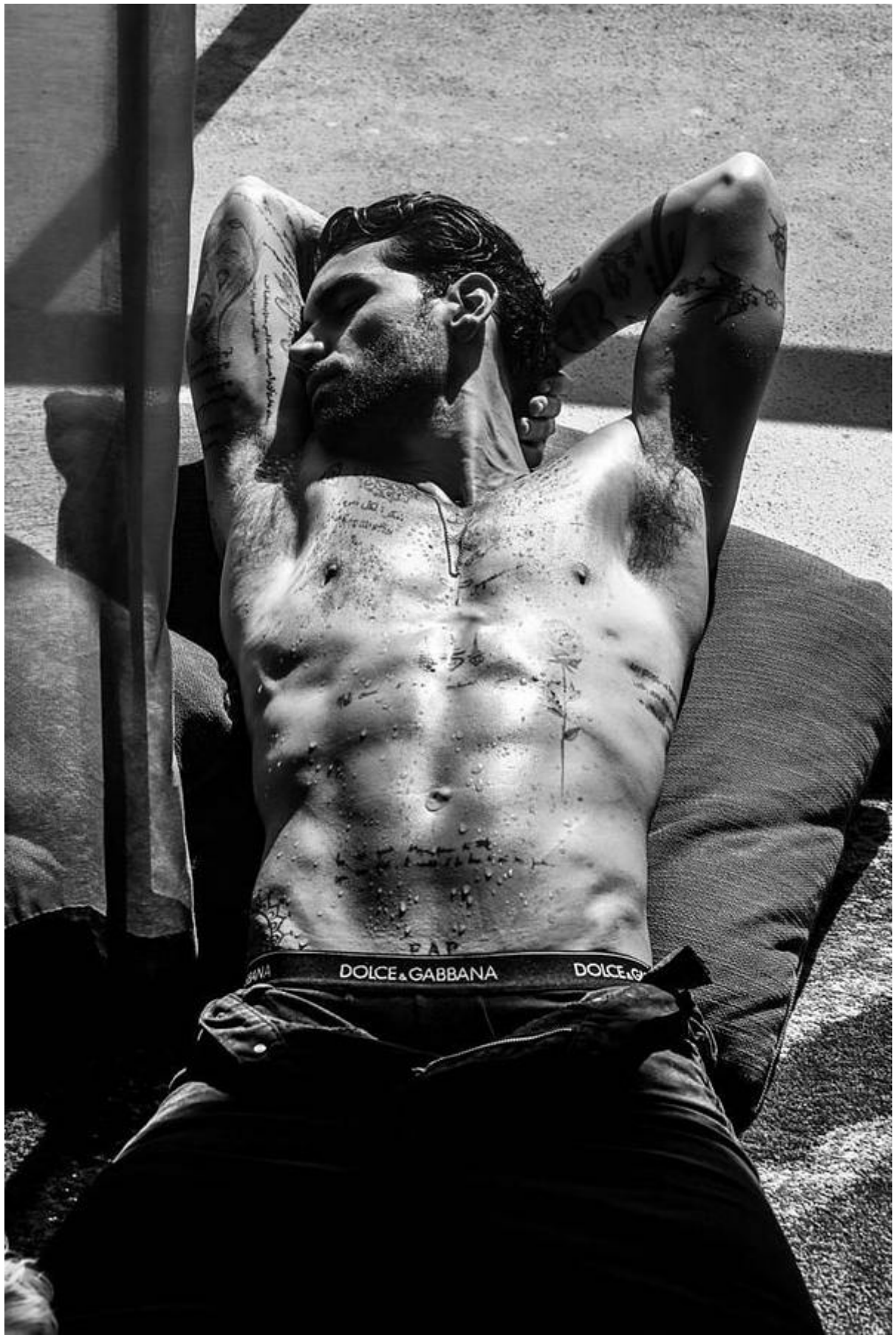
The Perfect Man

EMANUELE

FRANCO
LOU



MOI MODELS
MANAGEMENT



MOI MODELS
MANAGEMENT



DOLCE & GABBANA



MOI MODELS
MANAGEMENT



DOLCE & GABBANA



MOI MODELS
MANAGEMENT